

# X-Bows Driver 5.0.0.6



Primary concept: X-Bows is a keyboard with five different Layers.

- \*Standard layer: not programmable, the key value is exactly the same as displayed on the key cap;

- \*Driver layer: programmable, settings take effect when the driver is operating;

- \*Custom layer 1-3: programmable, settings could be stored in the X-Bows on-board memory chip. Can be used without the driver and on different computers.

Note: The Fn key is not programmable.

# Switching Layers



1. Switch Layers by pressing Fn+F9, Fn+F10, Fn+F11, Fn+F12.

Fn+F9=Driver layer

Fn+F10=Custom layer1

Fn+F11=Custom layer2

Fn+F12=Custom layer3

2. Switch Layers using FnX function (Layer switching shortcut).

FnX is a shortcut key specified by the user in an editable Layer to switch between Layers. When pressed, it switches to the specified Layer. When released, it returns to the current Layer.

Adding and DIY lighting effects

Recording macro

Custom Layer1-3

Driver Layer

Mapping key value

Setting macro key

Flash Light

Setting shortcut key





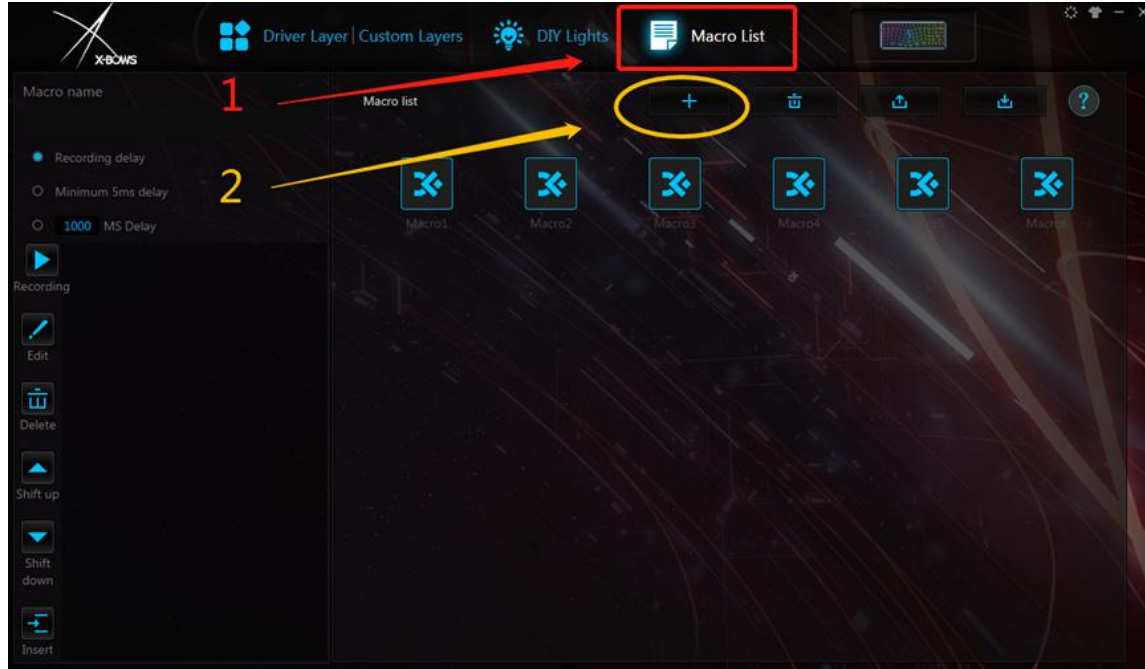
# Key Mapping



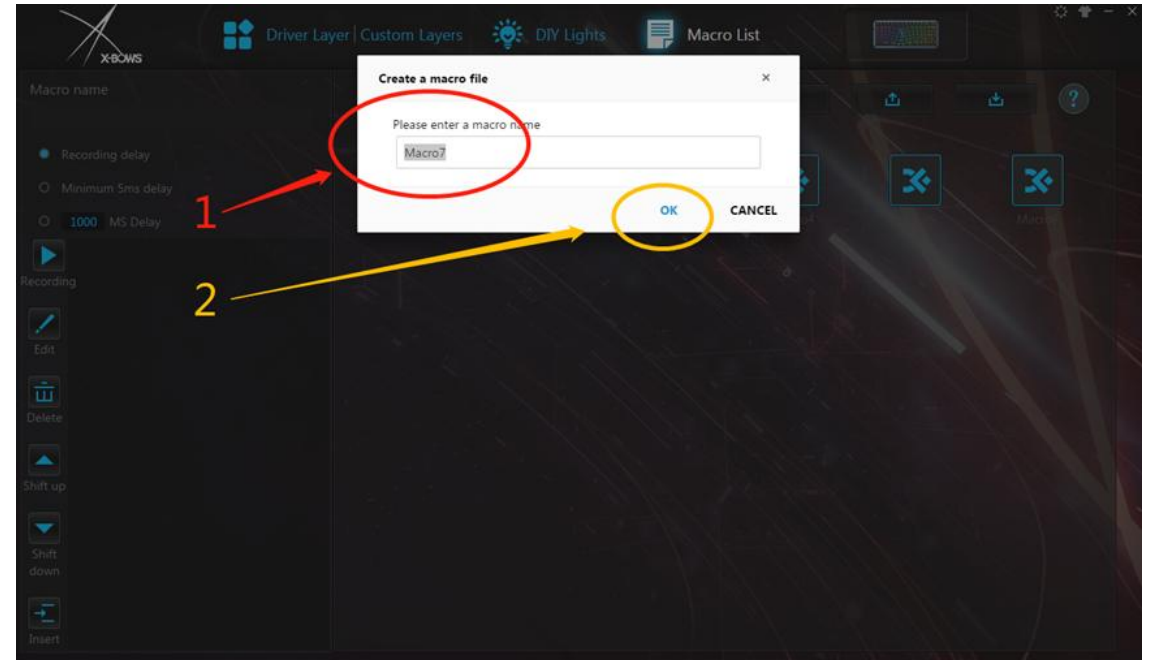
Example: Map the left Shift key to the Home key in the Driver Layer.

In each editable Layers, users can use this method to change the Qwerty layout to Dvorak layout.

# MACRO List

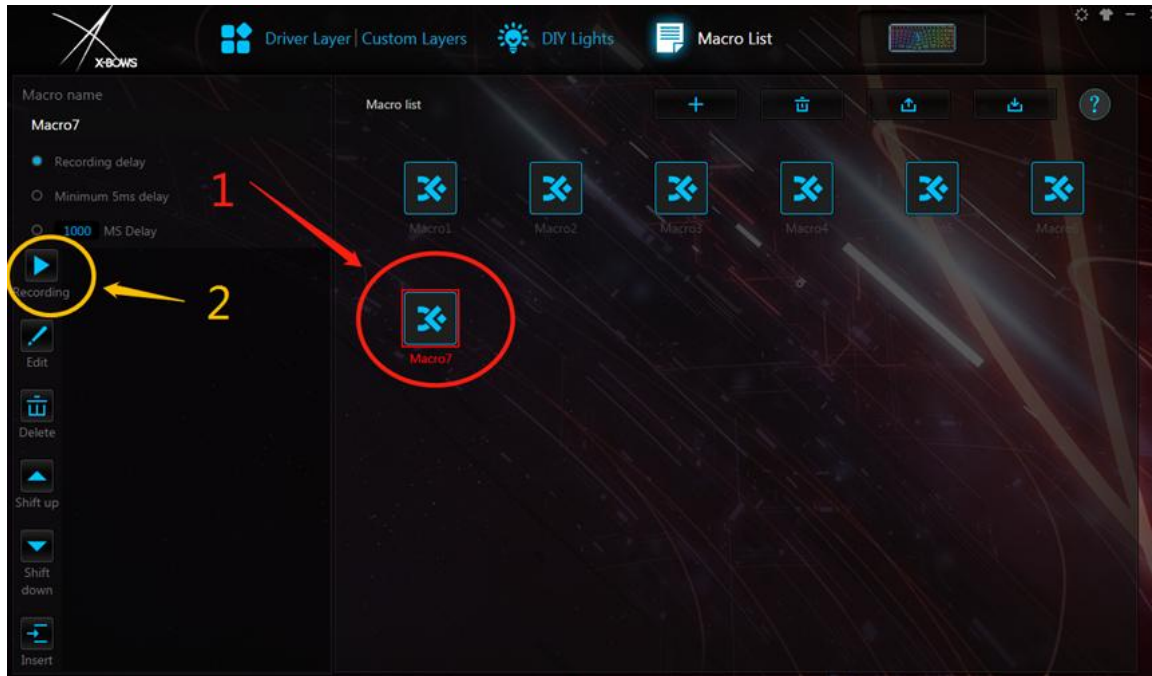


Click "Macro", then click "+" to add a macro.

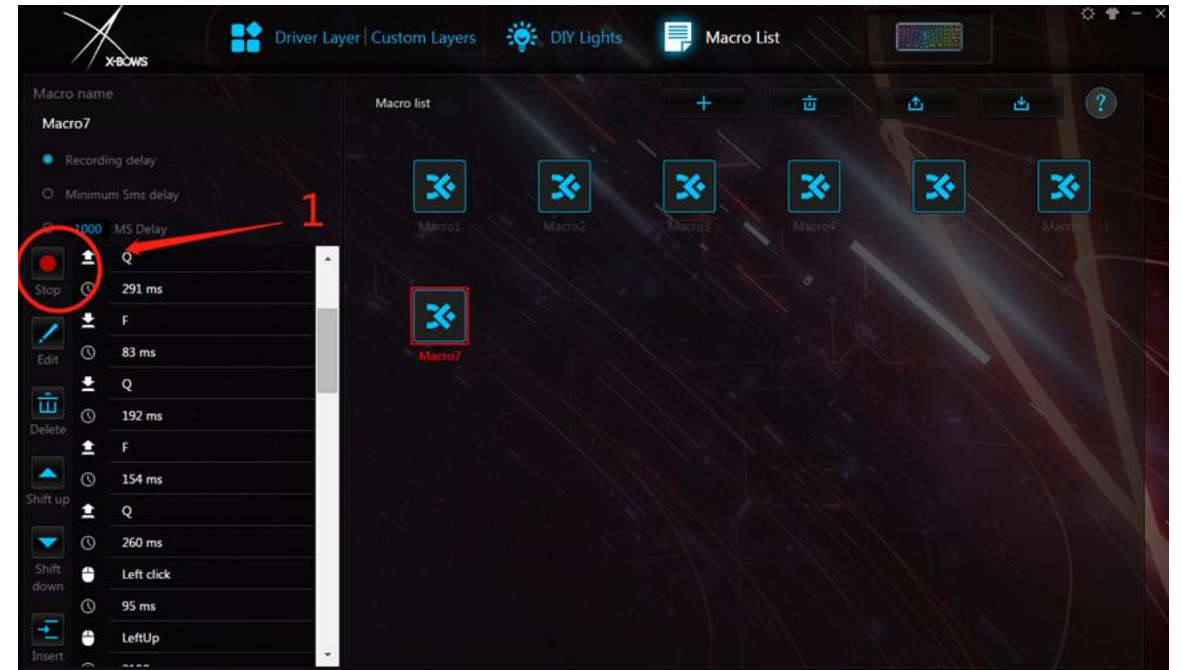


Name the macro in the pop-up dialog box, and click OK to save it.

# MACRO List



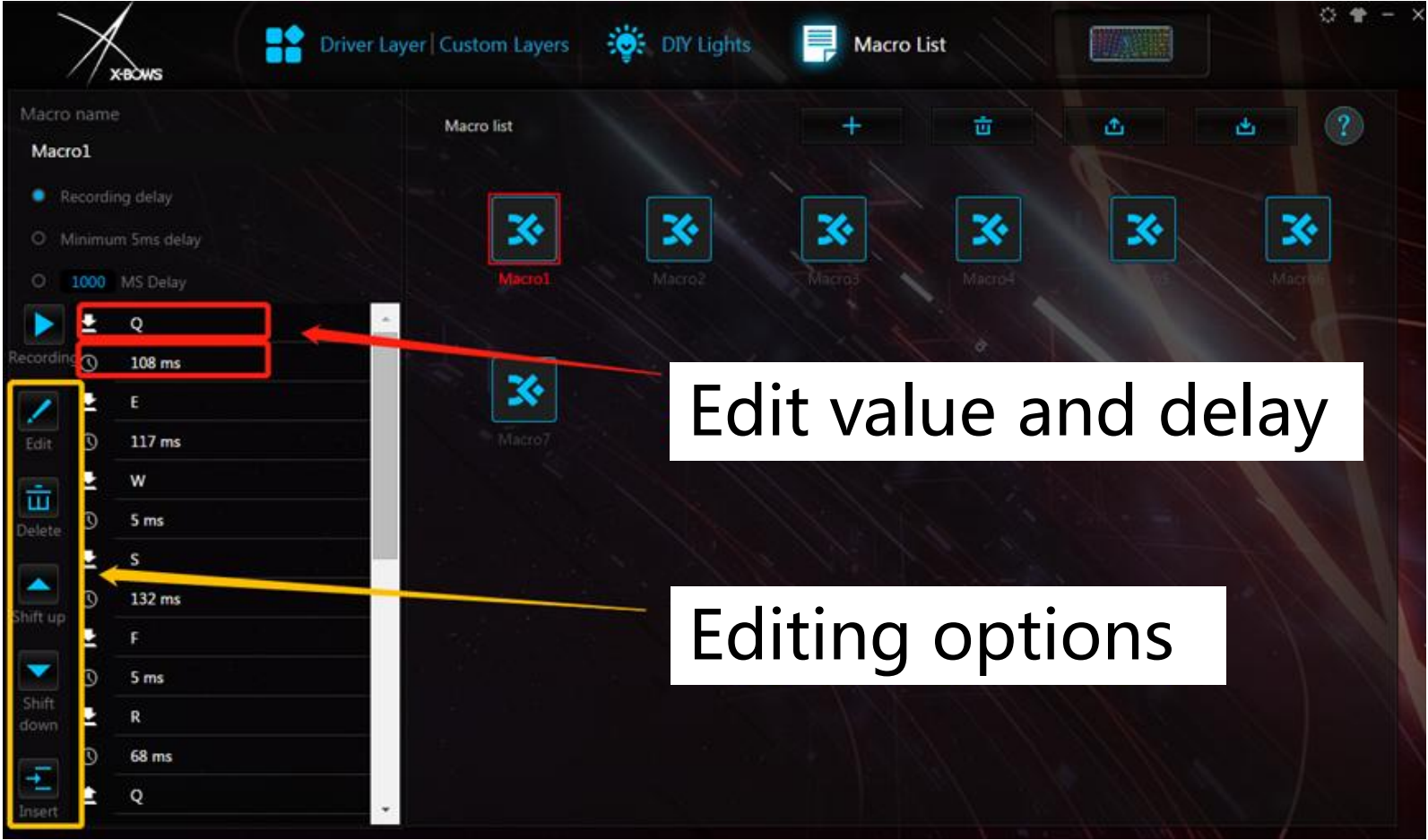
Click "Recording" on the left and operate the keyboard to start recording macro.



Click "Stop" to complete the recording



# MACRO List



Click the key value and time in the dialog box to edit it.

# MACRO Mapping

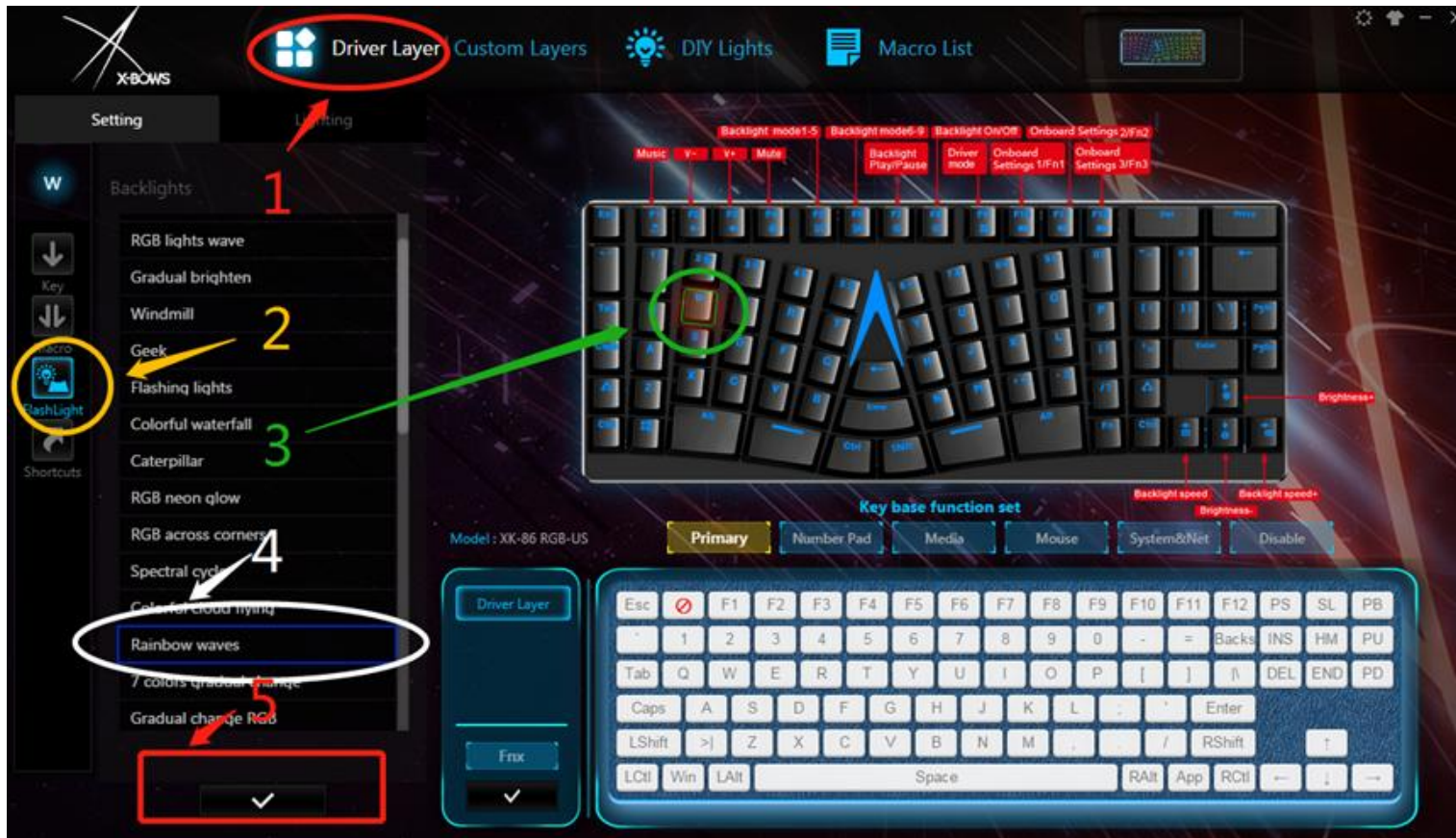


Example:  
Specify "1" key to perform Macro6  
in Custom layer2

- Select:
- "Custom layer"
  - "Layer2"
  - "Macro"
  - "1"
  - "Macro6"
- click "✓" to save  
click "Apply"



# Flash Lighting



Just for fun

When a key is being pressed, the entire keyboard will flash a preset lighting effect.

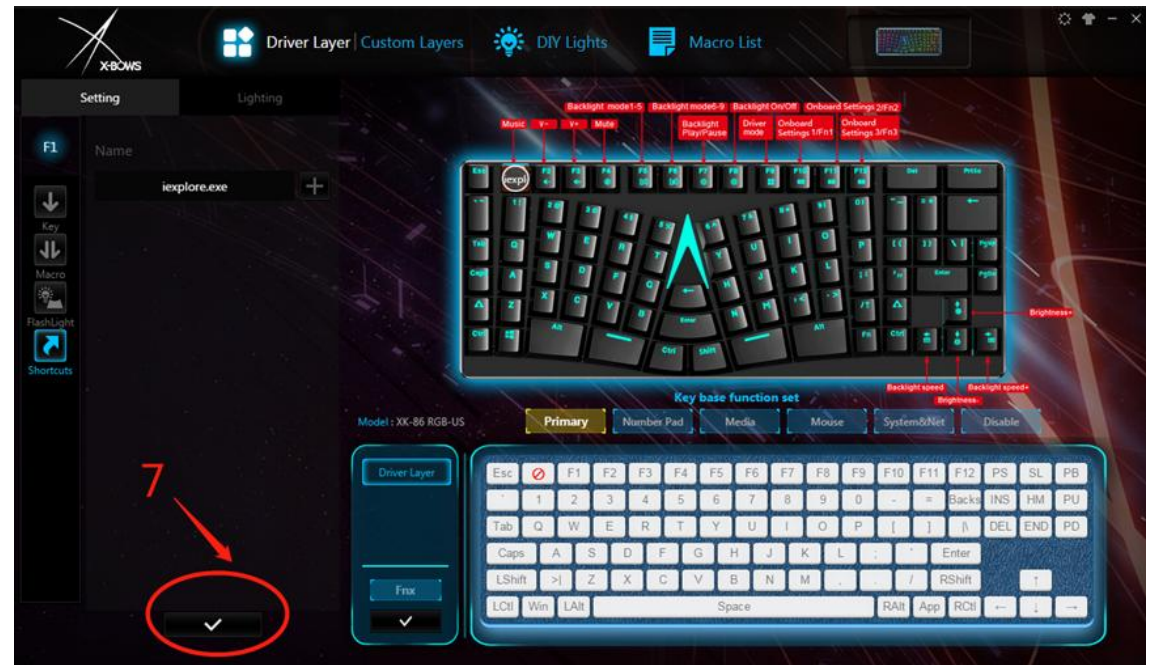
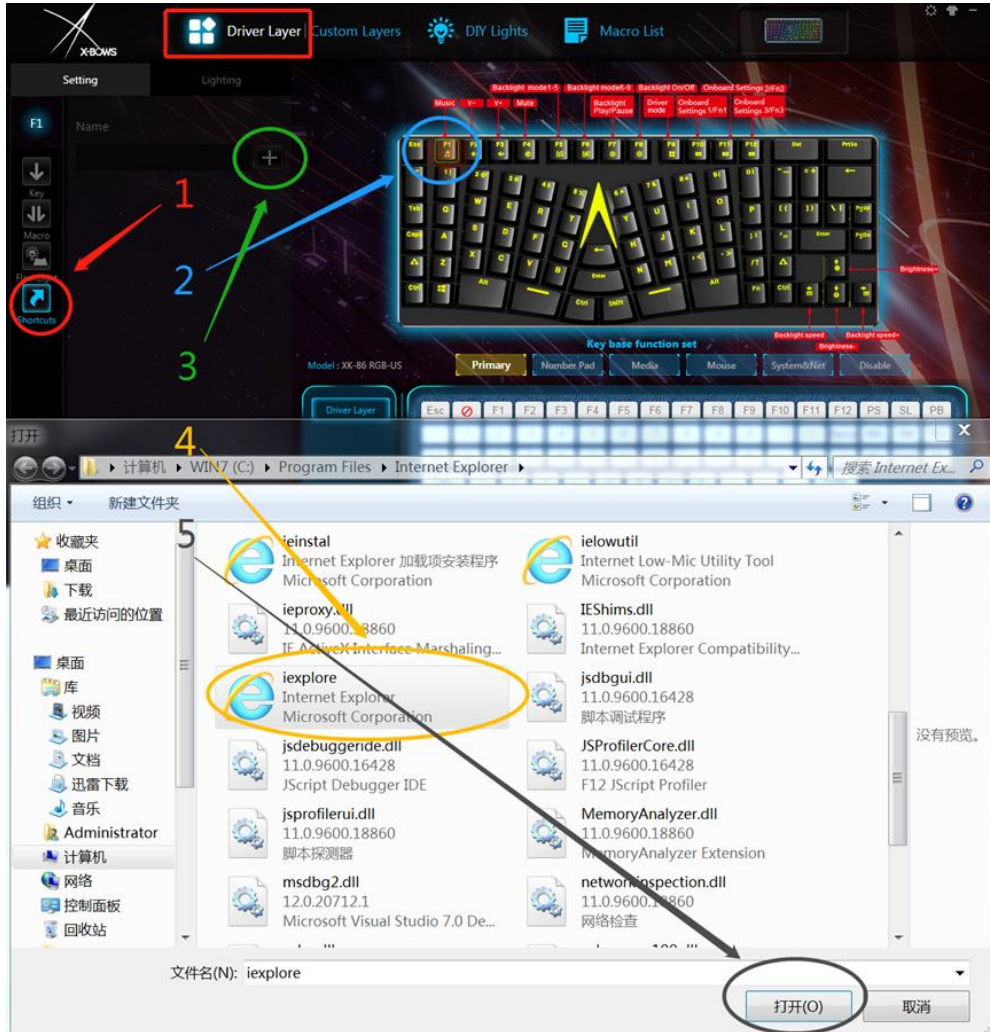
Example:

When "W" is being pressed, X-bows will flash the "Rainbow waves" lighting effect.

# Shortcuts

Allow users to map a key to open a program.  
Only available on the Driver Layer.

Example:  
Set F1 as a shortcut to Internet Explorer

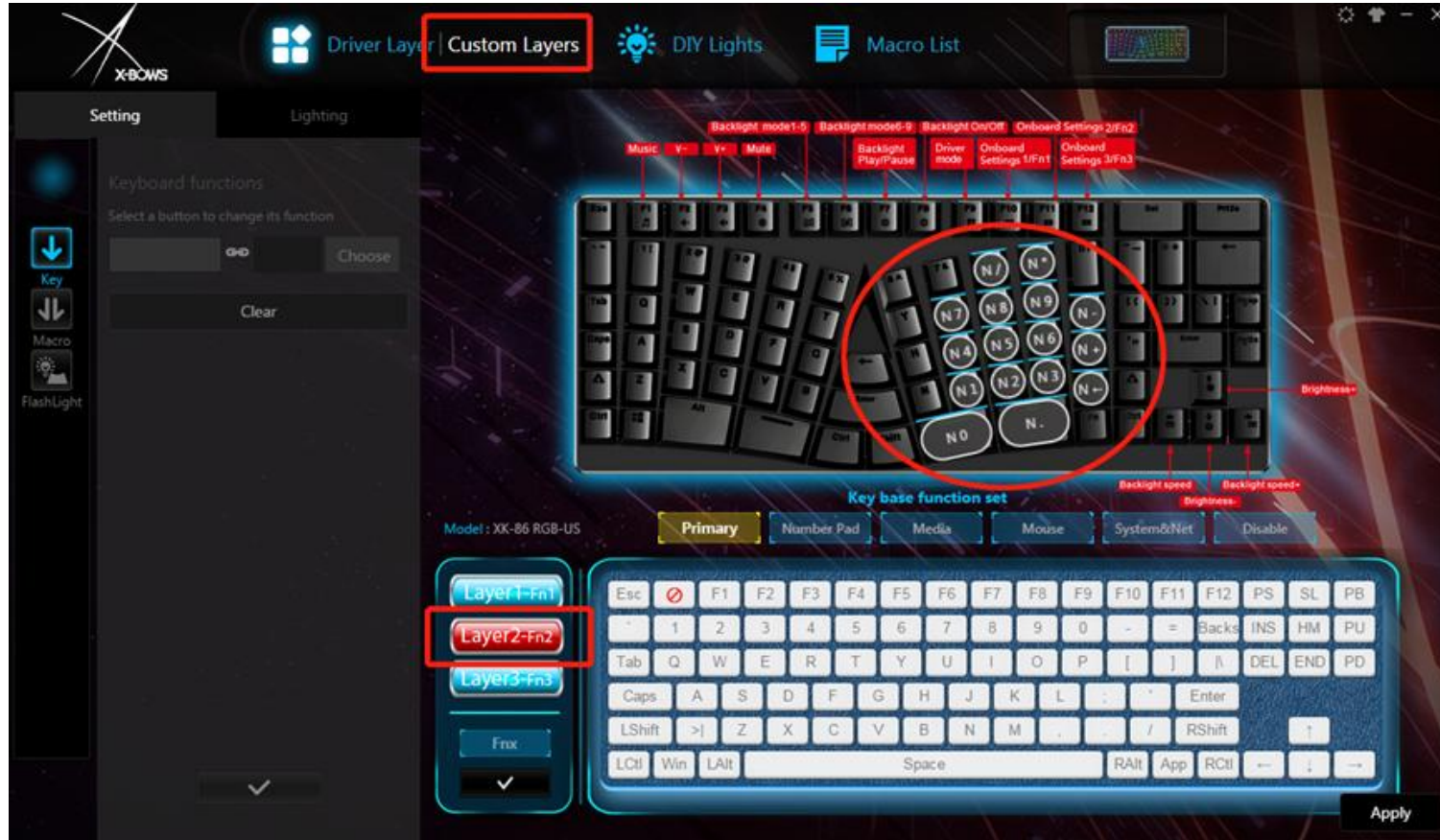








# Numeric Keypad



The right hand key area of Custom layer2 is preset with numeric keypad.

# DIY Lights



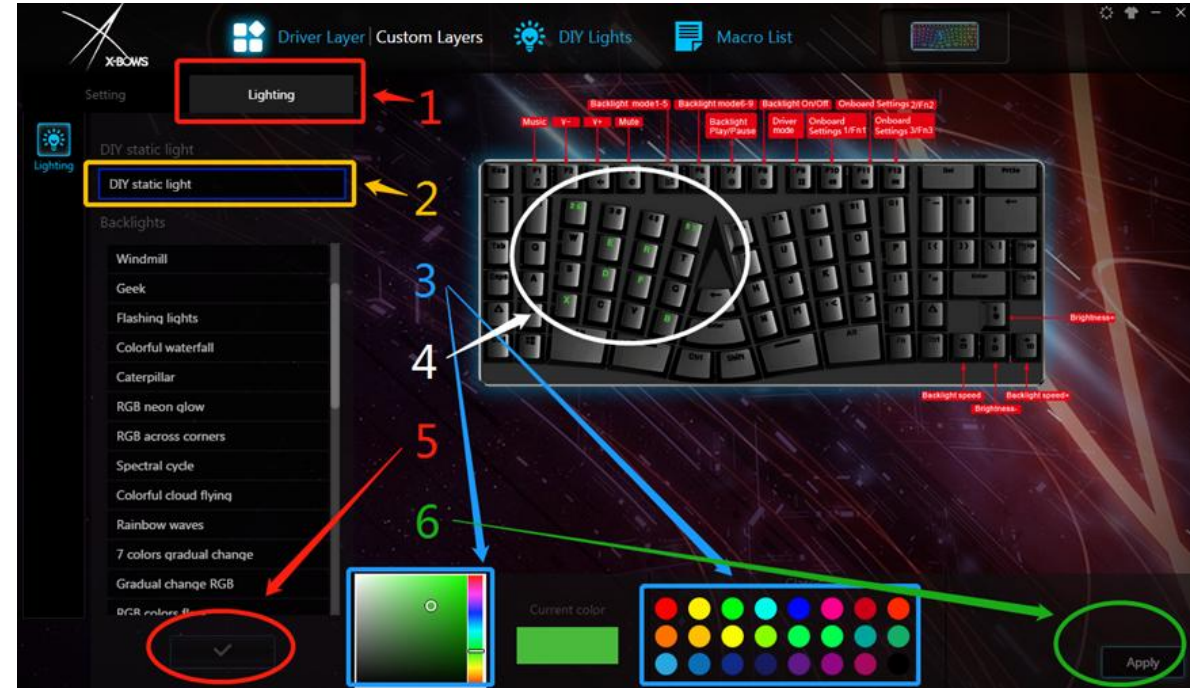
Adding and editing lighting effects

Setting up lighting effect library

# Lighting



Change light setting presets



DIY static lighting effect

Select color first and select key.  
Or use the mouse to select multiple keys.